

Manvers Whitewater Rescue & Recreation Channel



RESCUE



RECREATION

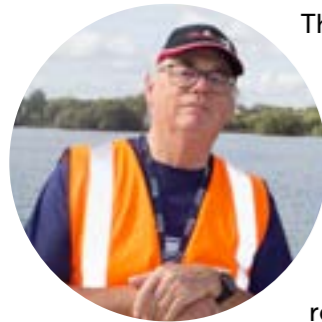


EDUCATION



Manvers Lake
& Dearne Valley Trust

Welcome to Manvers Lake



There are a number of White-Water Courses around the country. Only two Pinkston Quay [Glasgow] and the Tees Barrage [Teesside] have any form of comprehensive dedicated "Swift water" rescue and flood training facilities built

into them. Both these two sites have issues. Pinkston is a little too shallow and Teesside has occasional water quality issues. Both sites require travel and Pinkston overnight accommodation.

In recent years, whether due to global warming or simply more intense rain, there has been a rapid increase in the number of severe flood events. People and property are often quickly and somewhat unexpectedly inundated and find themselves in need of rescue and other assistance. Hence, there is a growing need to increase national UK water

"A brilliant opportunity to combine an additional state-of-the-art sustainable water recreation and rescue training facility at an existing high-quality site"

safety and rescue training capacity for Fire and Rescue services in all varieties of water from swift-water rescue to still water searching that can all be carried out in a safe and controlled environment.

The WWC recreation element can take a number of forms and is easily dovetailed at the WWC design stage into the F&R requirements. At the formal end there is the Olympic Sport of Canoe and Kayak Slalom. The UK has 5 Slalom divisions the highest of which is "Premier". MWBC has members in all divisions including one Olympic Team aspirant. The course as planned will be suitable to hold National Slalom Championship, plus Olympic coaching and athlete training.

At the other end of the scale is casual and Pay and Play recreation. This is members of the public using inflatable rafts, ducky's and rings to enjoy the White-Water experience.

Chris Hawkesworth
Club President

The Trust

TRUST TRUSTEES

Chris Hawkesworth

Ex BCU Facilities Manager, Mayor, Property Developer

Mark Benton

Local Resident – Site User, Coach/Lifeguard Consultant

Chris Wordsworth

Local Resident - Site User, ex Senior Surveyor

TRUST INCOME

Manvers Trust Group – turnover about £400k

Income Streams

- Café
- Club
- Lake Activities
- Car Parking
- Room Hire
- Events
- Donations and Grant aid
- Estate Service Charges



Annual Dragon Boat Race & Family Fun Day

History

Along with the steelworks, the pits were the industrial backbone of Britain. This is true of the Dearne Valley and until the 1980s it relied almost entirely upon coal-related industries. One of the largest of those collieries was Manvers Main which incorporated what was at one time the biggest coking plant in Western Europe. It was the largest contaminated site in Europe in the 1990s and the transformation of the area has been a triumph.

The site remained derelict until the mid-1990s, when Rotherham Council started a regeneration programme with funding from the European Regional Development Fund and Derelict Land Grants. Manvers, Wath Main Colliery and the Wath railway marshalling yard were demolished, cleared of contamination and landscaped. Manvers Lake was created.

In 2008 the British Canoe Union took a 250-year lease on Manvers Lake. A boat house complex with a cafe, slipway and parking soon followed.

In 2009 a multi-activity club was set up for members of the local community, called Manvers Waterfront Boat Club (MWBC). Their mission is to promote community participation in healthy recreation by providing facilities for:

Paddlesports, Dragon Boating, Angling, Cycling, Running, Sailing, Swimming, Triathlon, Windsurfing and Model Boating to the communities of Rotherham, Doncaster, Barnsley and the surrounding areas.

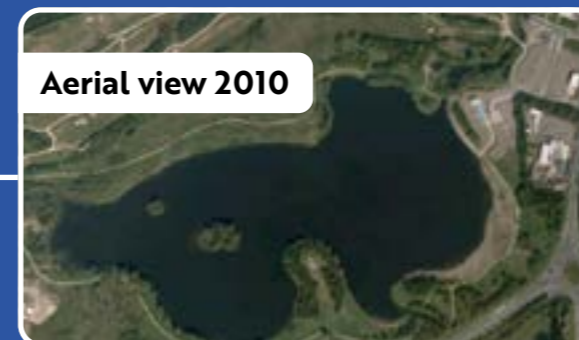
Manvers Lake & Dearne Valley Trust Ltd, a charitable company was formed in 2011.



Aerial view 1950



Aerial view 1995



Aerial view 2010



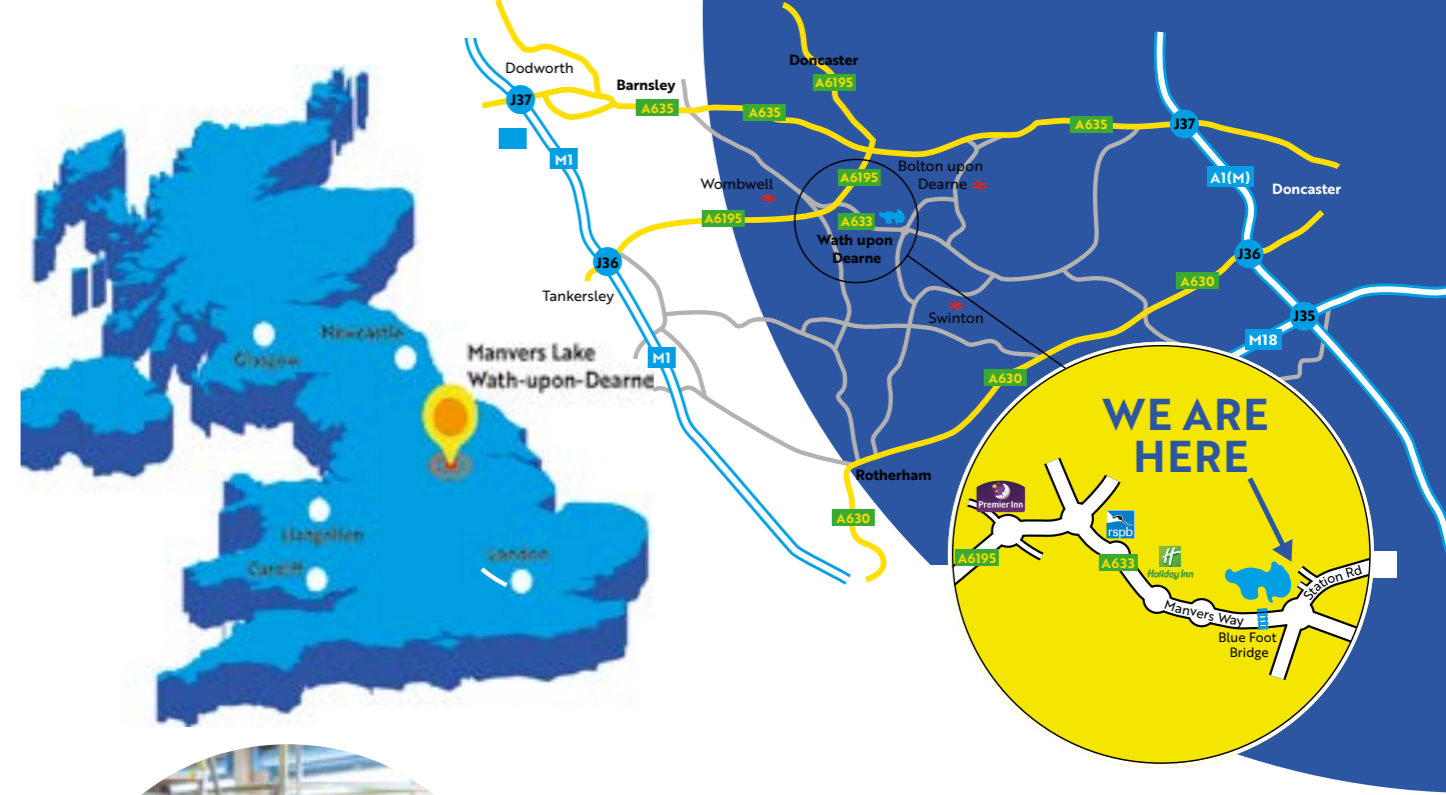
Aerial view 2023

Location

Northern centre of the UK

Lying in the heart of Yorkshire, Manvers Lake is simple to get to from whichever direction you are travelling. We are easily accessible via both the A1 and M1.

Leeds is 45 minutes to the North, and Manchester 60 minutes drive across the Pennine hills.



ECONOMIC REGENERATION

- Will attract visitors to the area
- Increase stays in local hotels
- Attract commercial users
- Fire services from around the country
- Job creation
- Construction
- Running of the centre

MANVERS LAKE AND THE BOATHOUSE

- Man-made balancing lake
- Excellent water quality
- Two Meeting Rooms – planning permission granted for additional training rooms
- Changing rooms including disabled changing
- Boat Storage
- Car Parking
- Cafe

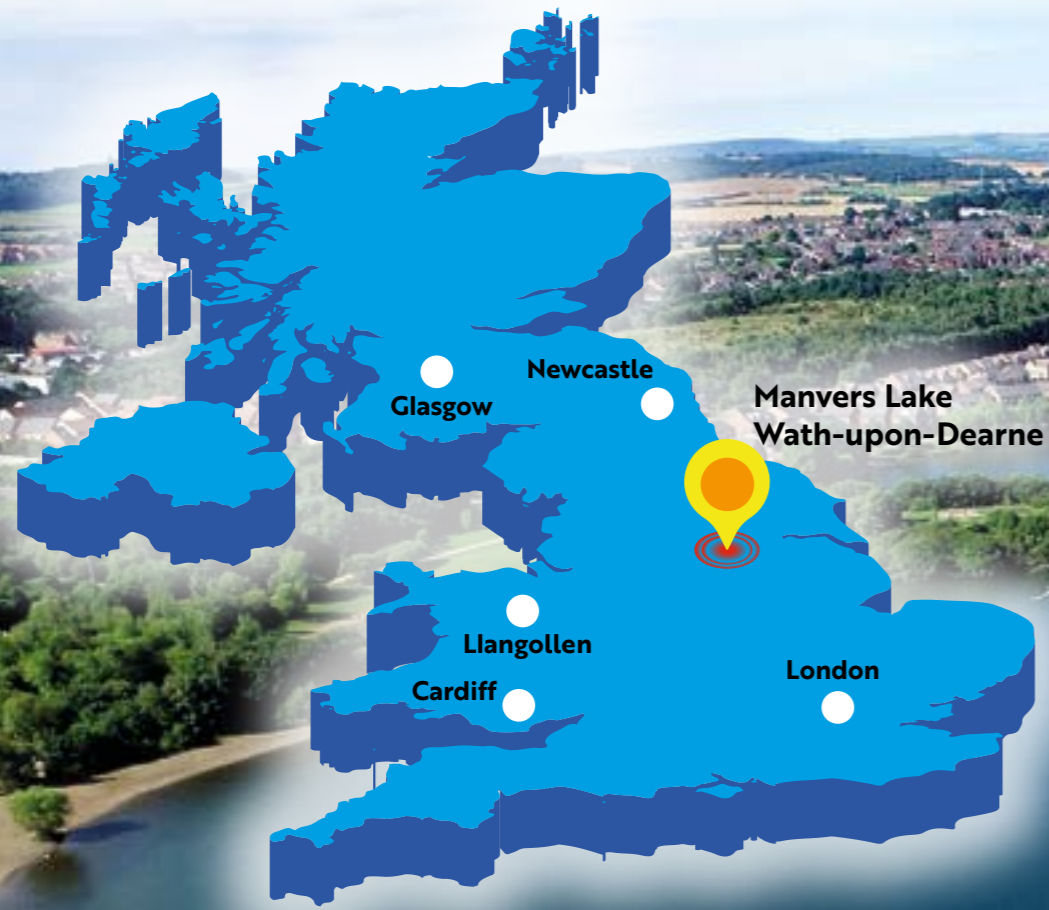


The Boathouse



Established in 2009 for the local community, the Boat Club currently has towards 2,500 members.

The Boathouse has a low carbon footprint.
It has a ground source heatpump which heats the building from the lake, combined with a large solar array which provides electricity throughout the day.



Development Location

South Bay

The area we have chosen for the Whitewater course is South Bay. As a sheltered cove this is the ideal location along with it's size and shape.

WATER QUALITY

We have excellent water quality and our results speak for themselves.



Our water quality is tested each month by an external company and all of the results are on our website.

The samples are analysed to determine Coliforms, E.Coli and Faecal (Intestinal) Eneerococci. The Analytical results are then compared against the Bathing Water Regulations 2013, based on the EC Bathing Water Directive 2006/7/EC.



Excellent water quality

Channel Usage

Rescue & Recreational

The Whitewater course has been designed to be dual use for both rescue & recreation. It will have predictable water levels which can be drained off in seconds when the pumps are switched off. The lower third will always have up to 5ft of water.

RESCUE AND RECREATIONAL USE

- **Dual Use by Design**
- **Rescue**
 - Designed for fire and rescue training, can add popular features
 - Resilience training - civilian, environment agency, flood wardens
 - Army & Navy - basic training, intro to water & inflatable boats
 - Training in erection of roadside flood barriers
 - Intro to moving water
 - Power Boat Training
 - Vehicle Rescue
 - Animals
- **Research**
 - In river & buildings
 - Sluice gate users
 - Universities / forward thinking
- **White Water**
 - 215m pumped white water slalom course
 - Other recreational use
 - Eco improvement

HIGH POTENTIAL USE

- **Rescue**
 - 43 Fires Services across the UK
 - All have to train in this environment
 - Limited availability at other sites
 - Large travel distances
 - Increased training potential for local FRS. South Yorkshire Fire & Rescue are situated further down the road within walking distance
- **Recreation**
 - Adjustable pump settings
 - Formal slalom
 - Olympic & premiere training and events
 - Olympic mimicary
 - National level for olympics & international level for training
 - Pay & play duckies
 - Limited local training venue
 - Local paddler development
 - Pay and play potential



Specialist Rescue Training

HOURS OF OPERATION

- **Rescue**
 - Monday to Friday 8am to 4pm
 - Other times on demand – night rescues
- **Recreation**
 - Monday to Friday 6pm to 8pm
 - Weekends and Bank Holidays



Whitewater Paddling





Scan the QR code
to make a donation and
help support Manvers
Whitewater Course



Manvers Lake Trust
The Boathouse, Station Road
Wath-upon-Dearne, Rotherham
South Yorkshire S63 7DG
Tel: 01709 878984
www.manverslaketrust.co.uk

